

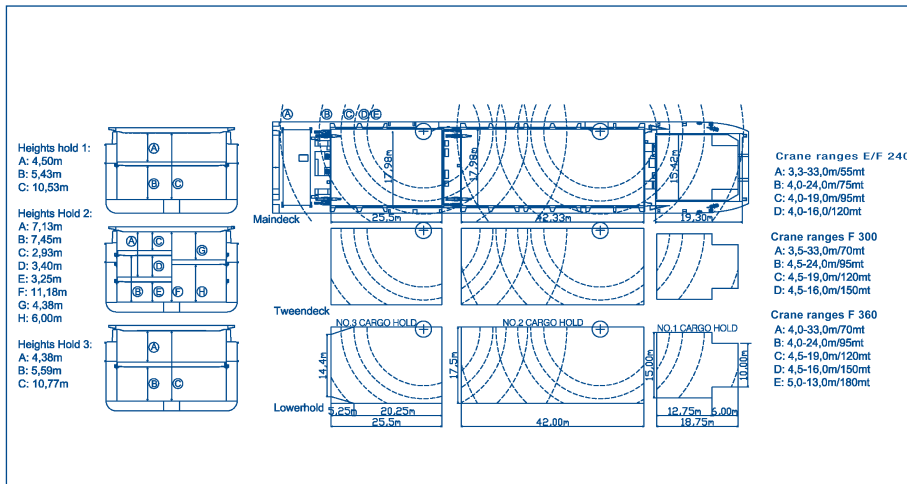


Your experts for heavy lift
and project cargo.

Beluga E/F-Series

E-240: MV »Beluga Elegance« · MV »Beluga Efficiency« · MV »Beluga Emotion« · MV »Beluga Eternity«
MV »Beluga Endeavour« · MV »Beluga Enterprise« · MV »Beluga Endurance«
MV »Beluga Energy« · MV »Beluga Expectation« · MV »Beluga Evaluation«

Flag	Antigua & Barbuda	Capacity	14.856 cbm incl. twd or 563.340/524.634 cbft
Builders/ Place/Date	Volharding Shipyards, The Netherlands in coop. with Qingshan/Jiangdong/ Jiangzhou Shipyards, China, 2004–2011	Container capacity	Hatchcover sqm: 1.462 sqm Tweendeck sqm: 1.424sqm Lower Hold sqm: 1.420 sqm Total sqm: 4.306 sqm
Type	Heavy Lift Multipurpose Dry Cargo Vessel, strengthened for heavy cargoes, equipped for the carriage of containers, tweendeck can be used as bulkhead in holds	Holds/ Hatches	Total container intake (basis no twd on board): 665 TEU + 4 FEU or 294 FEU + 81 TEU On deck: 331 TEU or 136 FEU + 59 TEU Under deck: 334 TEU or 158 FEU + 22 TEU Basis 14mt: 542 TEU (basis 45 % VCG) Reefer plugs: 0 (Standard); 25 (Beluga Expectation, Beluga Evaluation and all F-Series) Hold 1 container intake: 64 TEU or 24 FEU + 16 TEU Hold 2 container intake: 164 TEU + 4 FEU or 84 FEU Hold 3 container intake: 106 TEU or 50 FEU + 6 TEU
Main data	Call Sign: miscellaneous Port of Registry: St. John's Class: GL+100 A5 E3, G, IW, BWM-F, +MC E3 AUT Solas II - 2, Reg. 19, Great Lakes fitted, AMSA fitted		
Dimensions	LOA: 138,07 m LBP: 130,00 m Breadth mld.: 21,00 m Draft: 8,00 m ssw Depth mld.: 11,00 m Air draft: 39,40 m to keel (31,40 m + 8,00 m draft)		
Tonnage	Deadweight excl. twd: abt. 12.744 tdw Weight of twd: 396 mt GT: 9.611 NT: 4.260 Panama NT: 8.427 Suez NRT: 7.749		
Capacity	Hold no. 1 cbm: 2.701 cbm excl. twd/ 2.550 incl. twd or 95.350 cbft/90.052 cbft Hold no. 2 cbm: 8.362 cbm excl. twd/ 7.774 incl. twd or 295.301/274.536 cbft Hold no. 3 cbm: 4.890 cbm excl. twd/ 4.532 cbm incl. twd or 172.689/160.046 cbft Total cbm: 15.952 cbm excl. twd/		



Your experts for heavy lift
and project cargo.

Beluga E/F-Series

- F-240:** MV »Beluga Federation« · MV »Beluga Foundation« · MV »Beluga Fusion« · MV »Beluga Function« · MV »Beluga Fortification«
MV »Beluga Fascination« · MV »Beluga Formation« · MV »Beluga Flirtation« · MV »Beluga Favourisation« · MV »Beluga Fiction«
- F-300:** MV »Beluga Fighter« · MV »Beluga Fanfare« · MV »Beluga Finesse« · MV »Beluga Foresight« · MV »Beluga Family« · MV »Beluga Fantastic«
- F-360:** MV »Beluga Felicity« · MV »Beluga Fraternity« · MV »Beluga Fortune« · MV »Beluga Fortitude« · MV »Beluga Freedom«
MV »Beluga Festivity« · MV »Beluga Fidelity« · MV »Beluga Frequency« · MV »Beluga Faculty« · MV »Beluga Fantasy« · MV »Beluga Facility«
MV »Beluga Fairy« · MV »Beluga Fealty« · MV »Beluga Feasibility« · MV »Beluga Finality« · MV »Beluga Fluency« · MV »Beluga Faith«
MV »Beluga Festival« · MV »Beluga Firmament« · MV »Beluga Flashlight«

Hold 2: 42,00 m x 17,50 m;
Hold 3: 25,50 m x 17,50 m
narrows to 14,40 m over 5,25 m
Heights:
Tanktop - Hatchcover Hold 1: 10,53 m
Tanktop - Hatchcover Hold 2: 11,18 m
Tanktop - Hatchcover Hold 3: 10,77 m
Tanktop - Tweendeck (bottom edge)
Hold 1: 5,43 m
Tanktop - Tweendeck (bottom edge)
Hold 2: 3,25 m/6,00 m/7,45 m (adjustable)
Tanktop - Tweendeck (bottom edge)
Hold 3: 5,59 m
Tweendeck (top edge)
Hatchcover Hold 1: 4,50 m
Tweendeck (top edge)
Hatchcover Hold 2: 2,93 m/4,38 m/7,13 m
Tweendeck (top edge) Hatchcover
Hold 3: 4,38 m
Type of hatch covers: Hydr. folding type
Type of tweendeck: Pontoons; can be
used as vertical bulkheads in holds;
height of twd: 0,80 m
(Hold 1/Hold 2 aft)/0,60 m
(Hold 2 for 2 panels/Hold 3)
Holds equipment: all cargo holds are
CO₂ fitted
Ventilation: Ho. 1: 6 fold/Ho.2+3: 12
fold air change per hour

IMO classes In hold: Packaged goods: All classes except
1.1–1.6 (allowed in hold 1) and 5.2; Bulk:
Classes 4, 5.1, 6.1 (solids), 8, 9
On deck: All classes

Cargo handling gear E/F 240: 2 x 120 mt SWL El.-Hydr. Cranes
NMF, combinable up to 240 mt SWL;
Outreach: 4-16 m/120 mt; 4-19 m/95 mt;
4-24 m/75 mt; 3,3- 3 m/55 mt;

Load distribution

Main engine data

Manoeuvring data

Aux. Engine/Generator

Tank capacity

Nautical equipment

F 300: 2 x 150 mt SWL El.-Hydr. Cranes
NMF, combinable up to 300 mt;
Outreach: 4,5-16 m/150 mt; 4,5-19 m/
120 mt; 4,0-24 m/95 mt; 3,5-33 m /70 mt;
F 360: 2 x 180 mt SWL El.-Hydr. Cranes
NMF, combinable up to 360 mt;
Outreach: 5,0-13 m/180 mt;
4,5-16 m/150 mt; 4,5-19 m/120 mt;
4-24 m/95 mt; 4-33 m/70 mt

Tank top: 16,00 mt/sqm
Hatch cover weatherload: 1,75 mt/sqm
Hatch cover payload: 1,75 mt/sqm
Tween deck: 4,00 mt/sqm
(Ho.2 except highest pos., Ho.3); 2,50mt/sqm
(Ho.1, Ho.2 highest pos.)

Maker and type: MAK 6M43
Output: 5.400kW
Speed & consumption HFO: abt. 15 kn
on abt. 25 mt IFO 380 cst/day at 90 % MCR
Consumption MGO: At Sea: 0 mt/Idle: abt.
1,4 mt /Working: abt. 2,5 mt

Bowthruster: 500 kW
Rudder: Freehanging flap type

Aux. Engine/Generator: 3 x diesel driven
395 kW
Emergency Diesel: 1 x abt. 99 kW
Shaft generator: 1 x abt. 750 kW

Ballast water: 5.000 cbm
Fresh water: 128 cbm + 18,9 cbm
technical water
HFO: 948 cbm
MGO: 150 cbm

Fitted for GMDSS, dual ecdis